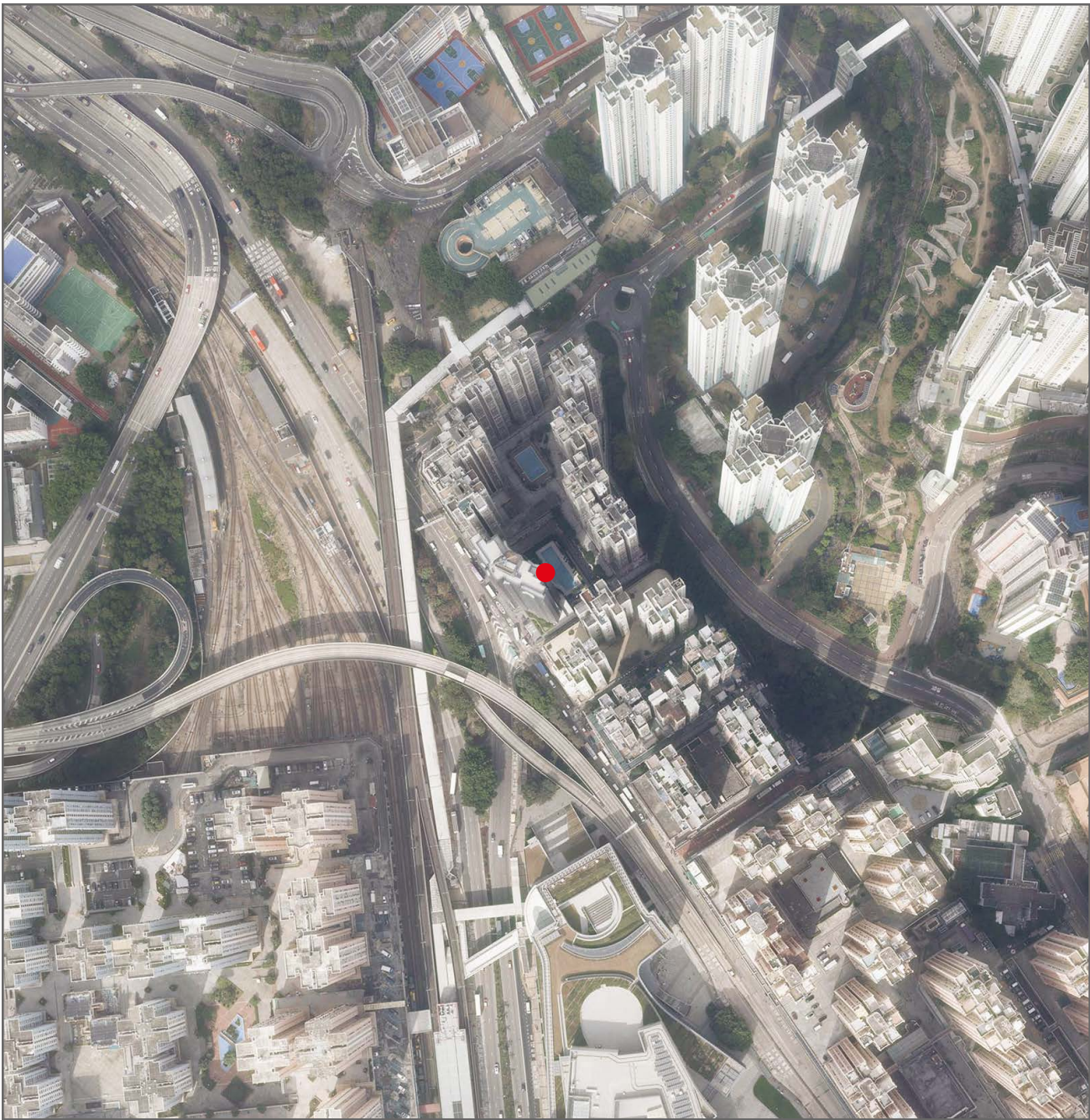


AERIAL PHOTOGRAPH OF THE DEVELOPMENT

發展項目的鳥瞰照片



● Location of the Development
發展項目的位置

Adopted from part of the aerial photograph taken by the Survey and Mapping Office of the Lands Department at a flying height of 3,000 feet. Photograph No. E248616C, Date of Flight: 7th January 2025.
摘錄自地政總署測繪處在飛行高度3,000呎拍攝之鳥瞰照片，編號為E248616C，飛行日期：2025年1月7日。

Survey and Mapping Office, Lands Department, the Government of HKSAR © Copyright reserved - reproduction by permission only.
香港特別行政區政府地政總署測繪處©版權所有，未經許可，不得複製。

The Aerial Photo is provided by the CSDI Portal and intellectual property rights are owned by the Government of HKSAR.
鳥瞰照片由空間數據共享平台提供，香港特別行政區政府為知識產權擁有人。

Remark:
The aerial photograph may show more than the area required under the Residential Properties (First-hand Sales) Ordinance due to the technical reason that the boundary of the Development is irregular.

備註；
由於發展項目的邊界不規則的技術原因，此鳥瞰照片所顯示的範圍可能超過《一手住宅物業銷售條例》所規定的範圍。